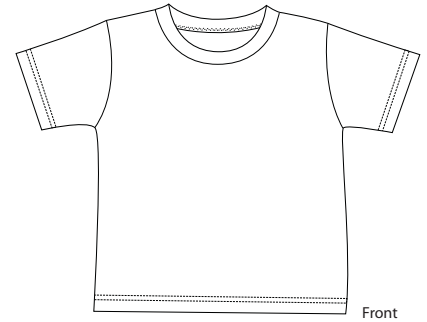
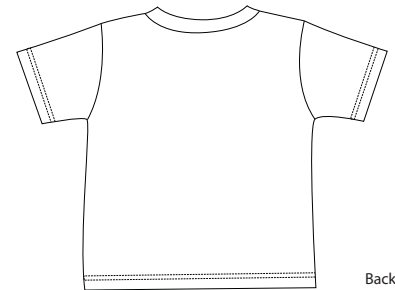


Toddler Tee



Front



Back



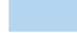
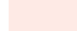


CAR02

- * 4.1-ounce * 100% ring spun combed cotton * Double-needle hem and sleeves
- * Large rib neck

Care Instructions:
Machine wash cold. Wash inside out.
Wash with like colors. Do not bleach.
Tumble dry low. Warm iron if necessary

Finished Measurements in Inches			
Sizes	2T	3T	4T
Length	14	15	16
Chest	12	12.5	13.5
Across Shoulder	10.5	11	12
Sleeve Length	4.5	4.75	4.75

Length measured from high point shoulder. Chest measured 1" under arm hole. Sleeve length measured from shoulder seam.
Shoulder measured from arm hole to arm hole.

Colors	
	Athletic Heather
	Black
	Light Blue
	Light Pink
	Red
	Royal
	White

Please Note:
Colors shown are approximate and for reference only.
For closest match see PMS colors, or for exact match, returnable samples and grommeted samples are available.

Color Chart							
Colors	Athletic Heather	Black	Light Blue	Light Pink	Red	Royal	White
Textile PMS	No Match	19-0509TC	13-4304TC	12-2906TC	18-1763TC	19-3864TC	11-0601TC
General PMS	No Match	Process Black	277C	705C	186C	288C	No Match