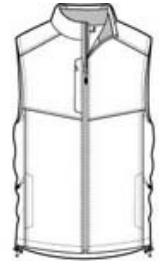


## Puffy Vest J709



Keep the warmth centered on your core in our new Puffy Vest. With the same quilted lines as our Puffy Jackets, these styles are great for layering over a long sleeve shirt or under a jacket. Some feature a colorful lining.

- 100% polyester shell, 100% polyester lining, 6-ounce polyfill
- Zip-through cadet collar
- Hidden zippered chest pocket
- Reverse coil zipper
- Interior storm flap
- Interior zippered pocket
- Interior pocket with drawcord and toggle
- Front zippered pockets
- Port Pocket™ for easy embroidery access
- Open hem with drawcord and toggles for adjustability



front

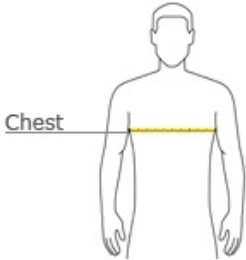


back

### CARE INSTRUCTIONS

NEW Port Authority® - Puffy Vest. J709

### HOW TO MEASURE



**CHEST**  
With arms down at sides, measure around the upper body, under arms and over the fullest part of the chest.

### SIZE CHART

|       | XS    | S     | M     | L     | XL    | 2XL   | 3XL   | 4XL   |
|-------|-------|-------|-------|-------|-------|-------|-------|-------|
| Chest | 32-34 | 35-37 | 38-40 | 41-43 | 44-46 | 47-49 | 50-53 | 54-57 |

### COLOR INFORMATION



Black/Black



Dark Slate/Black



Espresso/Foliage Green



Mediterranean Blue/Black



Olive/Cayenne